



Running Postman



Australian Plants Society - Melton & Bacchus Marsh Inc



In this issue:

175, May 2019

Contents

Plant Sale Report - 2019.....	2
Monthly Meeting Recap – Prostanthera and allied Genera	5
Next Meeting – Processes of Plant Pollination	6
In a Different Light	7
Newsletters and information.....	9
Photo Competition.....	9
Membership	10
Upcoming Events.....	10
Contacts:.....	11

Save the Date...

- Next meeting: Processes of Plant Pollination
- **Melton Community Hall**
- **High Street, Melton**
- **Thursday, 23 May, 7.30pm**
- **Dinner at Tabcorp Park at 6pm**

Speaker: Dr Jenny West



Supper Roster: Alan & Jean Partridge
(if you are unavailable to bring supper, please let a committee member know)

Upcoming Meetings:

June 27 – Fabaceae

Supper – Dave & Marg Peters

July – No Meeting

August 22 – Biodiversity in the Garden

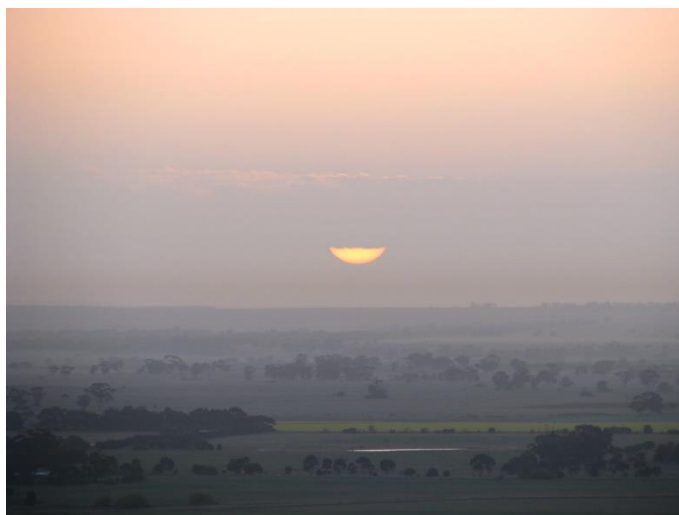
Supper – to be determined, volunteers welcome

Plant Sale Report - 2019

From the Treasurer's perspective

The 2019 plant sale was a success. Once again, luck shined on our event. Had it been scheduled two days earlier we would have been washed out. As it was, the rain had cleared and at the same time gave hope to all gardeners that plants could be purchased, planted and successfully grown.

Weather – a slight breeze, some break in the clouds to provide passing sunshine and only one drizzle event meant that those volunteers and patrons who attended were relatively comfortable. This brought a smile on the face of the organisers!



A special thanks to the following:

Norris McCarthy for designing and building the frame for our hanging basket display. He also ensured that the tables were delivered for use by the Friends of Melton Botanic Gardens, returned same to Bullengarook along with the large sign from in front of the church and assisted with everything 'heavy' during the entire day (including set-up and take-down).

Ken Ehrenberg for set-up/take-down assistance and moving the heavy stuff. I know I can count on his help every sale.

Christine Huf for taking responsibility for all things financial. Our new cashbox was a success and for every plant purchased, she kept a running tally. She also organised the site plan and assisted the 'sellers' with adherence to that plan. It worked very well and we learned that having this distributed to the sellers before the event was a bonus. On reflection, we could have moved Brian and Neil a little closer but that can be addressed in 2020.

Lucille McCarthy and **Susan Ehrenberg** for selling the plants. Every patron who showed any interest in the Hakea plants were soon advised on what would suit their plans, list or desires.

Members of our group – I know I will miss some but those who helped sometime during the sale are thanked profusely. Of course, one always remembers the first and last so it is a danger to start listing names however Jean Weybury's help with making sure the plants' labels were showing

made sure we got off to a good start. David Johnstone and John & Judy Smith helping shut up shop left me time to thank the sellers before they departed.

Church members:

Having the heavy but wonderful tables brought to our site by trailer was fantastic. It meant that our members did not have to carry them long distances. Our donation to the Uniting Church for use of the carpark and tables is money well spent. Provision of coffee/snacks by the Church members was welcome by all.

Sellers:

Additions for 2019 – Brian Weir, Vaughan's Native Plants and Goldfields Revegetation.

Deletions for 2019 – The Plant Hut

Ultimately, we provided potential patrons with a wide variety of plants to meet every need.

Successes:

- Having the description of each Hakea species in large print and placed for easy access. This helped both the assistant/s and the buyers.
- Hanging basket display – we could have sold them all! Of course, if we had advised the potential buyer of the RRP, \$100.00 each might have put some off the idea. Regardless, it gave many visitors a chance to see what they could do with their new purchases. Thanks to Lucille for providing interesting baskets which gave us a total of 5 award worthy creations.
- The potted plants proved a success as well and once again could have sold them all (especially the beautiful Grevillea that I won as a raffle prize – thank you Ash).
- The use of large rubber bands (yeah some of us were rubber band challenged) made sure we were environmentally friendly because we did not have to use plastic bags. Many buyers brought their own bag/bucket which indicates a change in mentality regarding reusable containers for purchases.
- All sellers were assisted during the bump-out process and demonstrated great comradery.

Finances:

As many members do not attend our AGM, I thought it appropriate to give an overview of the plant sale financials. Thanks to Barb & David for facilitating the Hakea pre-sales, we already had \$380.00 in the bank before the event. (Also, thanks to them both for getting the big sign up a couple of weeks before the sale)

The sellers' site fee totalled \$330.00 out of which we paid our \$150.00 donation to the church for use of the carpark space.

Hakea sales on the day came to \$1,029.00 (the odd amount is due to the discounted price on the 'runts of the litter'). We usually have some post-sale income and do have 94 Hakea plants leftover.

Our major expense was for the purchase of tubes (we have enough left over for about 2 more plant sales), potting mix and fertiliser.

The upshot of all this is (to date)

Income = \$1,739.00

Expenditure = \$823.61

Interim Balance = \$915.39

Hopefully the members of the community appreciated the valuable opportunity we provided.

Until next year – Cathy (happy treasurer)

Further note from Christine:

A HUGE thank you to **Cathy** also, tirelessly working in the days and weeks leading up to the sale, as well as the day itself, a wealth of knowledge that was definitely appreciated by the people that I spoke to. As always, Cathy assisted me no end and picked up the ball when I dropped it.

Jenny West also offered her assistance which was fantastic. Somehow she ended up buying more plants though... 😊

A current stocktake shows that we still have the following Hakeas:

dohertyi x 3	elliptica x 10	francisiana Sandstone x 1	laurina x 6	macraeana x 8
multilineata cream x 4	obtusa x 3	orthorhyncha x 1	petiolaris x 17	platysperma x 3
plurinervia x 5	pycnoneura x 12	rugosa x 3	sericea x 4	trifurcata x 14

Please let Christine know if you know anyone would like to purchase any of these.



Monthly Meeting Recap – Prostanthera and allied Genera

Miriam's passion was obvious when she talked to us about Mint Bushes! We saw two fantastic video clips of some of her favourite plants. Unfortunately I have limited space in the newsletter, or I would be tempted to fill it with all of the slides from her presentation. Here are just a few, with some fascinating info.

Genus: Prostanthera

- Named by Labillardiere, Botanist on French voyages around Australia
- From the Greek prostheke = an appendage & anther
- Refers to an appendage on the anthers
- Belongs to a world wide family of plants LAMIACEAE (Labiatae) – aromatic leaves

The species is classified into two sections based on flower morphology; Prostanthera and Klanderia.



Prostanthera section Prostanthera has:

- Corolla tube short & narrow at base becoming broadly campanulate (bell-shaped)
- Upper lip erect, broad two-lobed or emarginate (notched margin), shorter than lower lip
- Lower lip three-lobed, middle larger,
- Calyx - two lipped, upper recurved, lower folded upwards

Prostanthera section Klanderia has:

- Long corolla tube, upper lip concave
- Lower lip not longer than upper
- Calyx lips straight, almost equal in length



There are 35 species of Prostanthera in Victoria and they can be propagated very easily from cuttings. Naturally, there is a lot of interest in the oils from these species and they are a definite must in everyone's garden. They grow well in dappled light and are best under Eucalypts and Wattles. Plant them close to paths so that you brush past them often. Who cares about stopping and smelling roses when you have these delightful mints in your garden!

Next Meeting – Processes of Plant Pollination

Dr. Jenny West is one of our members. She will enlighten us on pollination: the fascinating mutualistic relationship between flowers and their pollinators. She hopes to encourage each of you to peer into the depths of your flowers to see the mysteries within.

About the speaker: Jenny first joined APS (Werribee group) in the early 1980's when she lived at Balliang East. She opened a small specialist native plant nursery and tissue culture laboratory at her home and called it Emu-Bush nursery due to her large collection of Eremophilas. In the early 1990's, Jenny went back to study and disappeared from the plant scene while she developed her career as a biological scientist. When she moved to Gordon in 2003, her passion for collecting native plants resumed and she continues to develop her large landscaped garden on a steep south facing slope overlooking the Gordon township.



Viola banksii can pollinate itself without the flower opening

The May meeting will be held at the
[Melton Community Hall, 238 High Street, Melton](#)

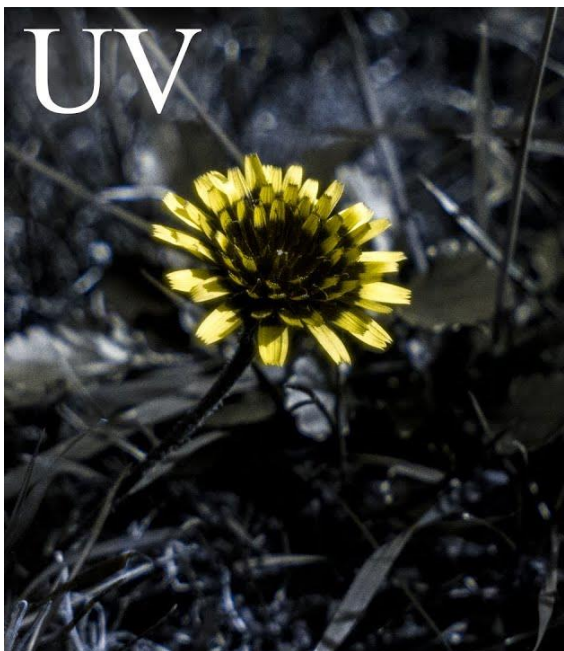
In a Different Light

In a Different Light – Australian Native Flower Photographs in Ultraviolet Light ... an exhibition by David Oldfield

FReD: The Floral Reflectance Database – A Web Portal for Analyses of Flower Colour, the authors have developed a catalogue that holds data on what colours flowers appear to be, to bees.



Though bees can see colour, they perceive the world differently from us. Unlike humans, bees have evolved a different colour recognition system which allows them to see colours in the ultra-violet range.



The image above is a photo of a Creeping Zinnia (*Sanvitalia procumbens*). The right side of the photo shows how we would perceive the flower. To the left, the UV shades have been made visible. Bees have the ability to see the two-toned colour of these petals.

<https://journals.plos.org/plosone/article?id=10.1371/journal.pone.0014287>

<http://www.reflectance.co.uk/> Two websites for more details

EVENT: In a Different Light

Australian Native Flower Photography in Ultraviolet Light

EXHIBITION DETAILS:

David has found that Australian flowers show similar patterns, as you will see if you visit his exhibition at the Newstead Arts Hub between 1st and 23rd June, open every Saturday and Sunday 10 am to 4 pm. It will also be open on Queens Birthday Monday 11th June.

The official opening will be Saturday 1st of June at 2pm.

Newstead Railway Arts Hub
8A Tivey Street, Newstead Vic

Open other weekends in June - Sat & Sun from 10am-4pm (closes 23 Jun 2019)

From the www.reflectance.co.uk website:

What is FReD?

FReD stands for the Floral REflectance Database. It is a database containing the spectral reflectances of many species of flower. A spectrophotometer is used to acquire these measurements. This works by shining a light on to the sample, and the proportion of light reflected back at the different wavelengths is measured.

Is there a charge for accessing FReD?

No. FReD is open-access and free for anyone to use.

How is FReD put together?

The FReD database is a MySQL database. The website brings you an interface to access the database which was developed on PHP 5 with its GDLib. some JavaScript, bringing you the implementation of AJAX for easier access to searches.

We recommend visitors use Mozilla Firefox to access this site.

How many samples are there in the database?

There is reflectance data for over 2000 individual samples in the database. Other entries will be added as measurements from more flowers are gathered and published.

Who developed FReD?

FReD was developed by research students at Queen Mary, University of London in the UK, in collaboration with researchers at the Royal Botanic Gardens, Kew.

What features does FReD contain?

- Simple Search - enter a keyword or combine your keyword with boolean expressions to search for records
- Advanced Search - select specific attributes/features with keywords to search for records
- hexSearch - select a region on the Colour Hexagon and search for flower records with hexagon coordinates in that region (not available for Safari or Opera users)
- Individual Colour Hexagon - you can view an individual colour hexagon diagram plotted for each flower record that has spectral reflectance data available. The excitation values are calculated and displayed alongside this.
- Individual Reflectance Graph - you can view a reflectance graph for each flower record available on the database. Simply click on the record that you are interested in.
- View all returned records on one Colour Hexagon Graph - you can view a single Colour Hexagon model with all returned records plotted on this. It will also produce some statistics of the most common keywords appearing in the results.

Newsletters and information

Remember to check out the dropbox account for new newsletters from other APS groups, study groups and more. They are added regularly and will be left there for a couple of months before being removed.

<https://www.dropbox.com/sh/o4khgv1wrjfmeg3/AABZ9PD-6KLgoLnz75N3MOM0a?dl=0>

Photo Competition

The Photo Competition this year is going to have different categories, just to mix things up a bit.

This year's categories are:

- Earth
- Wind
- Fire
- Water
- Black and White
- Open (photographer's choice)

Have a think about how you can incorporate these in a garden/plant related setting. Think outside the box – for example, red could represent fire. Add a title as an explanation (no more than 5 words) if you like. The categories don't need to be taken literally. Show your creativity.

Membership

It is that time of year again when membership is due.
All fees remain the same as last year:

APS - Vic	Melton & Bacchus Marsh	Total
Single Membership:		
\$35.00	\$10.00 (includes newsletter by Email)	\$45.00
	\$15.00 (printed newsletter by post)	\$50.00
Household Membership:		
\$40.00	\$10.00 (includes newsletter by Email)	\$50.00
	\$15.00 (printed newsletter by post)	\$55.00
Organisation Membership:		
\$44.00	\$10.00 (newsletter by Email)	\$54.00
OPTIONAL payment for ANPSA national magazine "Australian Plants"	4 editions per annum	\$15.00

Account Name: Australian Plants Society Melton and Bacchus Marsh Inc
BSB: 633 000 Account Number: 158 993 733

NOTE: If paying by electronic funds transfer, please ensure that your name appears in the transaction details.

Please refer to the attached form for more details. Payment by 30 June 2019 is appreciated.

Upcoming Events

1 June – Exhibition: In a Different Light

Australian Native Flower Photography in Ultraviolet Light

Opening - Saturday 1 June, 2019 (2-4pm)

Newstead Railway Arts Hub

8A Tivey Street, Newstead Vic

Open other weekends in June - Sat & Sun from 10am-4pm (closes 23 Jun 2019)

15 June – APS Geelong host Committee of Management meeting.

27 & 28 July - Cranbourne Friends Winter Plant Sale – 10.00 am to 4.00 pm. (Mel 133 K10)

Contacts:

Australian Plants Society – Melton & Bacchus Marsh Inc.

Incorporated in Victoria: A0026204P

ABN: 68 053 689 781

APS Melton & Bacchus Marsh Committee 2017/18

<i>President</i>	<i>Christine Huf</i>	<i>0412 081 074</i>	
<i>Vice President</i>	<i>Russell Wait</i>	<i>0428 388 211</i>	
<i>Secretary</i>	<i>(vacant)</i>	<i>email: apsmeltonbacchus@gmail.com</i>	
<i>Public Officer</i>	<i>David Pye</i>		
<i>Treasurer</i>	<i>Cathy Powers</i>		
<i>Committee</i>	<i>Lucille McCarthy, Barb Pye, Norris McCarthy</i>		
<i>Newsletter Editor</i>	<i>Christine Huf</i>	<i>0412 081 074</i>	<i>email: c.phot.804@gmail.com</i>

Find us on Facebook!

All contributions to the newsletter are gratefully received. Please send a word document and photos to the group's email address. If you have any questions, feel free to contact me via email or phone. I am also happy to research a subject for an article if you give me a topic you would like to see explored.

Postal address:

PO Box 946

Bacchus Marsh VIC 3340

Bank details: Bendigo Bank, Bacchus Marsh

Acc: Australian Plant Society – Melton & Bacchus Marsh Inc

BSB: 633 000 Acc No: 158993733

MEETINGS: 4th Thursday of the month, Feb – Jun, Aug – Nov (doors open at 7.30pm)

VENUE: Botanica Springs Community Centre, 249 Clarkes Rd, Brookfield (unless otherwise stated)

APS Victoria website : <http://www.apsvic.org.au/>

ANPSA website: <http://anpsa.org.au>

Disclaimer: Any errors in this publication are by the editor.